



DR ACADEMY

DO RIGHT FOR GENUINE EDUCATION

NELMANGALA : LTM BOYS CAMPUS
#2/5, NARAYANAPPA PALYA,
DASANPURA, TUMKUR ROAD,
BENGALURU - 560 062
Phone : 9513330438
8139966644 / 9980533120

#42, 100FT ROAD,
KAMMAGONDANAHALLI,
JALAHALLI WEST,
BENGALURU - 560 015
Phone : 9008030463
9008030896 / 9513330437

HOSKOTE - MALUR ROAD,
ISRI CROSS, KATTIGENAHALLI,
JADIGENAHALLI HOBLI,
BENGALURU - 562114
Phone : 9741332998
8147397999 / 9535527713

KCET EXAMINATION - 2026

DATE : 24-04-2026

BIOLOGY

CODE - D3

TIME : 02:30 PM TO 03:50 PM

LONG TERM COACHING

1ST BATCH FOR NEET - 2027

5TH STARTS ON

JUNE - 2026

NEET - 2025 TOPPERS

 607 MARKS AFNAAN PASHA App No. 250410602893	 605 MARKS RAKESH KUMBAR App No. 250410893858	 589 MARKS M LEENA REDDY App No. 250410154513	 588 MARKS JAYANTH K S App No. 250410619327
 581 MARKS CHANDANA REDDY N G App No. 250410232370	 581 MARKS BHAGYASHRI PATTAR App No. 250410153733	 579 MARKS KOTTAPALLI ABDUL KALAM App No. 250410865706	 577 MARKS RAJMANE TRUPTI RAHUL App No. 250410324087
 575 MARKS CHANDRIKA SAJJANAR App No. 250410695592	 572 MARKS VIJAY M App No. 250410629648	 571 MARKS ANMOL SHEGUNASI App No. 250410421533	 569 MARKS AKSHATA GURAPPA J App No. 250411245807
 562 MARKS SAMEERAHMAD SAIFANSAB App No. 250411621485	 562 MARKS RAKSHITH KUMAR S App No. 250410518308	 560 MARKS M L THANMAYI ANNAPOORNA App No. 250411113373	 558 MARKS SHREE GOURI App No. 250410227908
 555 MARKS YOGITHA D App No. 250410071616	 555 MARKS SURAJ K R App No. 250410942156	 555 MARKS NAGASAI CH App No. 250410870699	 553 MARKS PRAJWAL N S App No. 250410415967
 575 MARKS CHANDANA B M App No. 250410272395	 563 MARKS SUHAS GOWDA B R App No. 250410159008	 555 MARKS SUHAS MAHANTESH H App No. 250410499664	 553 MARKS CHINMAYI SARANGAMATH App No. 250410267618

NEET TOPPERS OF DR ACADEMY

NEET - 2024 JIPMER - PUDUCHERRY  706 MARKS VENKATA SURYA TEJA GUDURI	NEET - 2021 JIPMER - PUDUCHERRY  695 MARKS LAKSHMAN REDDY B V	NEET - 2024 BMC - BANGALORE  690 MARKS ABHISHEK A BADAGOUDAR	NEET - 2024 BMC - BANGALORE  686 MARKS RAHUL KADLAGOND	NEET - 2024 BIMC - BELAGAVI  686 MARKS AMEERMUSADDIQ SANADI	NEET - 2024 KIMS - HUBLI  686 MARKS ADITYA SAKRI
NEET - 2024 BMC - BANGALORE  681 MARKS UTTAM SUBHASH HUKKERI	NEET - 2024 SABVIMS - BENGALURU  681 MARKS MOHAMMED NAASIRUDEEN D	NEET - 2024 MMCRI - MYSORE  680 MARKS SUHAS L KORABU	NEET - 2023 BMC, BANGALORE  680 MARKS SHRAVAN REDDY C N	NEET - 2023 JIPMER PUDUCHERRY  677 MARKS KAMALIQA CHALLA	NEET - 2022 BIMC, BELAGAVI  677 MARKS SACHI KALLOLI
NEET - 2023 AIIMS, NAGPUR  676 MARKS MOHAMMED SULEMAN	NEET - 2022 AIIMS, BHOPAL  675 MARKS CHATHUSH GOWDA D S	NEET - 2022 BMC, BANGALORE  672 MARKS CHANDANA D	NEET - 2022 BMC, BANGALORE  672 MARKS SOWRAV B	NEET - 2024 ESIMC - BANGALORE  671 MARKS ZOYA FIRDOUSE	NEET - 2024 MMCRI - MYSORE  671 MARKS GIRISH J PARAMAGOND
NEET - 2024 KIMS - HUBLI  670 MARKS SNEHA SUBHAS PATIL	NEET - 2024 KIMS - HUBLI  666 MARKS RAJIV BHEEMASHANKAR CHOUDHARI	NEET - 2024 KIMS - HUBLI  665 MARKS C SATHYAM	NEET - 2021 BMC, BANGALORE  665 MARKS RASHMI PATIL	NEET - 2020 BMC, BANGALORE  665 MARKS JAYANTH L S	NEET - 2024 GIMS - GULBARGA  663 MARKS MOHAMMED ZEESHAN
NEET - 2024 MIMS - MANDYA  662 MARKS POOJA U	NEET - 2024 MMCRI - MYSORE  662 MARKS SAMPAT GOPAL GOKAK	NEET - 2022 BMC, BANGALORE  662 MARKS SIDDHARTH A S	NEET - 2024 KIMS - HUBLI  661 MARKS DIVYA M YALIGAR	NEET - 2023 JIPMER PUDUCHERRY  661 MARKS SHASHANK SURAPOOR	NEET - 2024 BIMC - BELAGAVI  660 MARKS ANMOL R KOTNAL
NEET - 2024 KIMS - BANGALORE  660 MARKS ADHITHYA SUDARSAN GOKHALE	NEET - 2024 MMCRI - MYSORE  660 MARKS SHRIDHAR BIRADAR	NEET - 2024 SABVIMS - BENGALURU  660 MARKS POOJA N	NEET - 2024 SABVIMS - BENGALURU  660 MARKS TARUN N	NEET - 2021 KIMS, HUBLI  660 MARKS NACHIKET KEMPANNA	NEET - 2024 KIMS - HUBLI  657 MARKS SINDHU VADAVADI
NEET - 2024 MIMS - MANDYA  657 MARKS S SUHAS	NEET - 2024 SABVIMS - BENGALURU  657 MARKS SHREEHARINATH A B	NEET - 2024 GMC - SAMBHAJINAGAR  656 MARKS PRATEEK SUBHASH TOPINATTI	NEET - 2024 KIMS - HUBLI  656 MARKS YASEEN MULLA	NEET - 2024 MIMS - MANDYA  656 MARKS KUSUMA M	NEET - 2024 SIMS - SHIMOGA  656 MARKS NAGAVARDHAN MR
NEET - 2024 VIMS - BELLARY  656 MARKS N POOJITHA SHREE	NEET - 2023 BMC, BANGALORE  656 MARKS BHANU PRAKASH D M	NEET - 2021 AIIMS, HYDERABAD  656 MARKS VARUN KAJAGAR	NEET - 2024 AIIMS, HYDERABAD  655 MARKS AMODH NAIK	NEET - 2024 BIMC - BELAGAVI  655 MARKS SAKSHI CHANDRASHEKHAR YALARADDI	NEET - 2024 HIMS - HASSAN  655 MARKS NITYA REDDY C
NEET - 2024 SIMS - SHIMOGA  655 MARKS MAHIPAL SINGH	NEET - 2024 VIMS - BELLARY  654 MARKS NIVEDITA	NEET - 2023 BMC, BANGALORE  654 MARKS ABHISHEK V G	NEET - 2021 BMC, BANGALORE  654 MARKS KUMARESH HIREMATH	NEET - 2024 BIMC - BELAGAVI  653 MARKS SIDDANAGOUDA S PATIL	NEET - 2024 KIMS - HUBLI  653 MARKS VINDHYA B G
NEET - 2024 BIMC - BELAGAVI  652 MARKS BHOOMIKA BAYAKOL	NEET - 2024 VIMS - BELLARY  652 MARKS CHIRANTHAN J	NEET - 2024 VIMS - BELLARY  652 MARKS B K V KARTHIKEYA	NEET - 2024 KIMS - HUBLI  651 MARKS SHASHANK VALIMARAD	NEET - 2024 KIMS - HUBLI  650 MARKS PARASHURAM KYADIGGERI	NEET - 2024 MIMS - MANDYA  650 MARKS PREETHAM K M

DAY & RESIDENTIAL
SEPARATE HOSTEL FOR BOYS & GIRLS

LTM ADMISSIONS OPEN

QUESTION PAPER ANALYSIS

CHAPTER

NO. OF QUESTIONS

I PUC

THE LIVING WORLD

1

BIOLOGICAL CLASSIFICATION

1

PLANT KINGDOM

1

MORPHOLOGY OF FLOWERING PLANTS

2

ANATOMY OF FLOWERING PLANTS

1

CELL : THE UNIT OF LIFE

2

BIOMOLECULES

2

CELL CYCLE AND CELL DIVISION

2

PHOTOSYNTHESIS IN HIGHER PLANTS

0

RESPIRATION IN PLANTS

0

PLANT GROWTH AND DEVELOPMENT

1

II PUC

SEXUAL REPRODUCTION IN FLOWERING PLANTS

3

PRINCIPLES OF INHERITANCE AND VARIATION

2

MOLECULAR BASIS OF INHERITANCE

2

MICROBES IN HUMAN WELFARE

3

BIOTECHNOLOGY : PRINCIPLES AND PROCESSES

3

BIOTECHNOLOGY AND ITS APPLICATIONS

2

ECOSYSTEM

2

QUESTION PAPER ANALYSIS

CHAPTER

NO. OF QUESTIONS

I PUC

ANIMAL KINGDOM

1

STRUCTURAL ORGANISATION IN ANIMALS

1

BREATHING AND EXCHANGE OF GASES

1

BODY FLUIDS AND CIRCULATION

1

EXCRETORY PRODUCTS AND THEIR ELIMINATION

2

LOCOMOTION AND MOVEMENT

1

NEURAL CONTROL AND COORDINATION

1

CHEMICAL COORDINATION AND INTEGRATION

1

II PUC

HUMAN REPRODUCTION

3

REPRODUCTIVE HEALTH

3

EVOLUTION

3

HUMAN HEALTH AND DISEASE

4

ORGANISMS AND POPULATIONS

2

BIODIVERSITY AND CONSERVATION

1

GENETIC DISORDERS (HUMAN GENETICS)

5

1. A chromosome with an extremely short and a very long arm is called _____.
 1) Metacentric 2) Telocentric
 3) Acrocentric 4) Submetacentric

Ans. 3

2. The following statements are the steps in the catalytic action of an enzyme. Arrange them in correct sequence.
 a) The active site of the enzyme, now in close proximity of the substrate, breaks the chemical bonds of the substrate and the new enzyme product complex is formed.
 b) The substrate binds tightly to the enzyme, inducing a change in the active site of the enzyme.
 c) The enzyme releases the products of the reaction and the free enzyme is ready to bind to another molecule of the substrate.
 d) The substrate binds to the active site of the enzyme.
 1) c, a, b, d 2) d, b, a, c
 3) a, b, c, d 4) d, c, b, a

Ans. 2

3. A diploid cell which has 8 chromosomes undergoes meiosis and produces 4 daughter cells. What is the number of chromosomes present in each daughter cell formed at the end of meiosis-I?
 1) 8 chromosomes 2) 4 chromosomes
 3) 16 chromosomes 4) 32 chromosomes

Ans. 2

4. Cellulose is an important structural component in plants which is made up of
 1) Fructose 2) Galactose
 3) Glucose 4) Sucrose

Ans. 3

5. In a healthy individual, the Glomerular Filtration Rate (GFR) is _____.
 1) 125 ml/minute 2) 125 ml/hour
 3) 126 ml/minute 4) 125 ml/second

Ans. 1

6. A hormone that initiates flowering and synchronising fruit set in pineapples is _____.
 1) Ethylene 2) Abscissic Acid
 3) Auxins 4) Gibberellins

Ans. 1

7. Identify the incorrect statement regarding respiratory system in man.
 1) Lungs are covered by double-layered membrane called pleura.
 2) The alveoli are surrounded by rich blood capillaries.
 3) The trachea, bronchi and bronchioles are supported by 'O' shaped cartilaginous rings.
 4) The right lung is slightly larger than the left lung.

Ans. 3

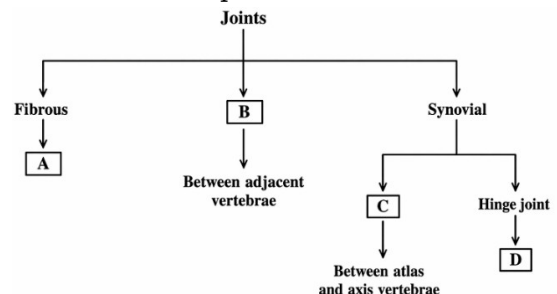
8. Consider the following statements with respect to ECG [Electrocardiogram] and choose the correct answer.
Statement-I: 'P' wave represents the depolarisation of ventricles.
Statement-II: 'T' wave represents the repolarisation of ventricles.
 1) Statement-I and Statement-II are wrong.
 2) Statement-I is correct but Statement-II is wrong.
 3) Statement-I is wrong but Statement-II is correct.
 4) Statement-I and Statement-II are correct.

Ans. 3

9. Aldosterone from adrenal cortex stimulates the reabsorption of water and Na⁺ from _____.
 1) Proximal Convoluted Tubule (PCT)
 2) Ascending limb of loop of Henle
 3) Distal Convoluted Tubule (DCT)
 4) Descending limb of loop of Henle

Ans. 3

10. Observe the flowchart with reference to joints and their examples.



Choose the correct option that matches with the letters given in the boxes.

- 1) A - Cartilaginous joint, B - Pivot joint, C - Knee joint, D - Cranial sutures
 2) A - Pivot joint, B - Knee joint, C - Cranial sutures, D - Cartilaginous joint
 3) A - Saddle joint, B - Cranial sutures, C - Cartilaginous joint, D - Pivot joint
 4) A - Cranial sutures, B - Cartilaginous joint, C - Pivot joint, D - Knee joint

Ans. 4

11. Unipolar neurons are found usually in the embryonic stage. They have
- 1) One axon and one dendrite
 - 2) Cell body and one axon
 - 3) Cell body with one axon and many dendrites
 - 4) Neither axon nor dendrites.

Ans. 2

12. Gastrin is a hormone secreted by gastrointestinal (GI) tract, which stimulates the secretion of
- 1) Hydrochloric acid and pepsinogen
 - 2) Pancreatic enzymes and bile juice
 - 3) Water and bicarbonate ions
 - 4) Bicarbonate ions and pepsinogen

Ans. 1

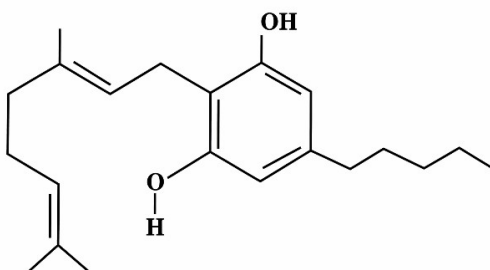
13. Choose the correct sequence of wall layers in a microsporangium of an angiosperm.
- 1) Epidermis, Middle layer, Endothecium, Tapetum
 - 2) Epidermis, Endothecium, Middle layer, Tapetum
 - 3) Epidermis, Tapetum, Middle layer, Endothecium
 - 4) Epidermis, Middle layer, Tapetum, Endothecium

Ans. 2

14. Which of the following statement is/are correct for cleistogamous flowers
- a) They have exposed anthers and stigma
 - b) They produce assured seed set
 - c) They need pollinators for pollination
 - d) Variations in traits are not seen in next generation
- 1) Only Statement (b) is correct
 - 2) Statements (a) and (c) are correct
 - 3) Statements (b) and (d) are correct
 - 4) Statements (b) and (c) are correct

Ans. 3

15. Identify the drug molecule from the skeletal structure shown below.



- 1) Opioid
- 2) Cannabinoid
- 3) Coca-alkaloids
- 4) Morphine

Ans. 2

16. Identify the **correct** path of milk secretion by the mammary glands:
- 1) Alveoli → mammary duct → ampulla → mammary tubule → lactiferous ducts
 - 2) Alveoli → mammary tubules → mammary duct → ampulla → lactiferous ducts
 - 3) Alveoli → ampulla → mammary duct → mammary tubules → lactiferous ducts
 - 4) Alveoli → lactiferous ducts → mammary duct → ampulla → mammary tubule

Ans. 2

17. Match items in Column-I with Column-II and choose the correct option.

	Column-I		Column-II
a)	Acrosome	i)	Contains numerous mitochondria which produce energy
b)	Head	ii)	Facilitates sperm motility
c)	Middle piece	iii)	Filled with enzymes that help in fertilization
d)	Tail	iv)	Contains elongated haploid nucleus

- 1) a - iii, b - i, c - iv, d - ii
- 2) a - iv, b - ii, c - iii, d - i
- 3) a - iii, b - ii, c - iv, d - i
- 4) a - iii, b - iv, c - i, d - ii

Ans. 4

18. Which of the following does **NOT** produce seminal plasma?
- 1) Epididymis
 - 2) Bulbourethral glands
 - 3) Seminal vesicles
 - 4) Prostate gland

Ans. 1

19. Which of the following Sexually Transmitted Infections (STIs) are **not** completely curable?
- 1) AIDS, Genital warts
 - 2) Chlamydiasis, Gonorrhoea
 - 3) Genital warts, Hepatitis B
 - 4) AIDS, Genital herpes

Ans. 4

20. Which of the following statements is **NOT** true about 'Saheli'?
- 1) It is a non-steroidal preparation
 - 2) It is a 'once-a-week' pill
 - 3) It has low contraceptive value
 - 4) It has fewer side effects

Ans. 3



DR ACADEMY

DO RIGHT FOR GENUINE EDUCATION

BENGALURU | HYDERABAD

JEE MAIN - 2025 ACHIEVERS



99.42
NANDISH M



99.24
JAYANTH K S



Congratulations

EXEMPLARY PERFORMANCE IN THE JEE MAIN - 2026

JAYANTH GOWDA R

98.94

APP.NO. 260320062280

TEJAS KENCHAPPA

98.81

APP.NO. 260310597858

REDDY SRIHARI V

98.10

APP.NO. 260310192057

 97.96 APP.NO. 260310493466	 97.75 APP.NO. 260310797312	 97.34 APP.NO. 260310637090	 97.21 APP.NO. 260310806003	 96.62 APP.NO. 260310638056	 96.43 APP.NO. 260310718943	 96.34 APP.NO. 260310349746
 96.24 APP.NO. 260310917297	 95.92 APP.NO. 260310488132	 95.84 APP.NO. 260310637512	 95.24 APP.NO. 260310674654	 95.22 APP.NO. 260310867415	 95.06 APP.NO. 260310594915	 95.02 APP.NO. 260310439376
 94.82 APP.NO. 260310635876	 94.82 APP.NO. 260310789905	 94.79 APP.NO. 260310303978	 94.72 APP.NO. 260310669444	 94.61 APP.NO. 260310627277	 94.50 APP.NO. 260310506801	 94.42 APP.NO. 260310586338
 94.39 APP.NO. 260310393311	 94.36 APP.NO. 260310898333	 94.07 APP.NO. 260310867994	 93.98 APP.NO. 260310616723	 93.76 APP.NO. 260310589098	 93.41 APP.NO. 260310802775	 93.11 APP.NO. 260310963076
 92.94 APP.NO. 260319871388	 92.93 APP.NO. 260310623906	 92.71 APP.NO. 260310347432	 92.52 APP.NO. 260310913612	 92.46 APP.NO. 260310654142	 92.32 APP.NO. 26032022435	 91.71 APP.NO. 260310922910
 91.70 APP.NO. 260310403807	 91.64 APP.NO. 260310854947	 91.38 APP.NO. 260310298883	 91.25 APP.NO. 260310512048	 91.09 APP.NO. 2603105496161	 90.94 APP.NO. 260311006807	 90.82 APP.NO. 260310908623
 90.68 APP.NO. 260310894844	 90.67 APP.NO. 260310594083	 90.37 APP.NO. 260311002818	 90.35 APP.NO. 26031118010	 90.32 APP.NO. 260310656589	 90.25 APP.NO. 260310177214	 90.11 APP.NO. 260310351712
 90.11 APP.NO. 260310402671	 90.10 APP.NO. 260310807475	 90.06 APP.NO. 260310955599	 90.00 APP.NO. 260310685286			

ADMISSION OPEN 2026 - 2027

DAY & RESIDENTIAL SEPARATE HOSTEL FOR BOYS & GIRLS

#42, 100FT ROAD, KAMMAGONDANAHALLI,
JALAHALLI WEST, BENGALURU - 560 015
90080 30463 / 90080 30896 / 97400 79996

NELAMANGALA : #2/5, NARAYANAPPA PALYA,
DASANAPURA, TUMKUR ROAD, BENGALURU - 560 062.
95133 30438 / 81399 66644 / 99805 33120

21. A woman, unable to conceive after many years of regular unprotected coitus, went to a specialized clinic. On complete examination, the woman was found to be normal, while the male partner was diagnosed with infertility and was unable to inseminate the female due to low sperm count. Suggest the appropriate Assisted Reproductive Technology (ART).
- 1) ZIFT - Zygote Intra Fallopian Transfer
 - 2) IUI - Intra Uterine Insemination
 - 3) AI - Artificial Insemination
 - 4) GIFT - Gamete Intra Fallopian Transfer

Ans. 3

22. The genotypes of husband and wife are $I^A I^B$ and $I^A I^O$. Among the blood groups of their children, how many different genotypes and phenotypes are possible?
- 1) 4 genotypes and 4 phenotypes
 - 2) 4 genotypes and 3 phenotypes
 - 3) 3 genotypes and 4 phenotypes
 - 4) 2 genotypes and 3 phenotypes

Ans. 2

23. The classical example of point mutation is
- 1) Haemophilia
 - 2) Sickle cell anaemia
 - 3) Cystic fibrosis
 - 4) Phenyl ketonuria

Ans. 2

24. Read the following statements.
- Statement I:** In a typical test cross, an organism showing a dominant phenotype is crossed with the recessive parent.
- Statement II:** The ratio of organisms showing dominant and recessive traits in F_1 generation of a test cross indicates that the organism with unknown genotype is homozygous dominant. Choose the **correct** option.
- 1) Both Statement I and Statement II are true
 - 2) Both Statement I and Statement II are false
 - 3) Statement I is true but Statement II is false
 - 4) Statement I is false but Statement II is true

Ans. 3

25. Thalassaemia and Sickle cell anaemia are due to a problem in globin molecule synthesis. Select the correct statement.
- 1) Sickle cell anaemia is due to a quantitative problem of globin molecule.
 - 2) Both are due to qualitative defects in globin chain synthesis.
 - 3) Both are due to quantitative defects in globin chain synthesis.
 - 4) Thalassaemia is due to less synthesis of globin molecules.

Ans. 4

26. Who amongst the following scientist/s had no contribution in the development of the double-helix model for the structure of DNA?
- 1) Maurice Wilkins
 - 2) Rosalind Franklin
 - 3) Meselson and Stahl
 - 4) Erwin Chargaff

Ans. 3

27. In a DNA molecule, cytosine is 28% . Calculate the percentage of adenine.
- 1) 56%
 - 2) 36%
 - 3) 22%
 - 4) 18%

Ans. 3

28. Arrange the below given steps of DNA fingerprinting in sequence by selecting the appropriate option.
- a) Digestion of DNA by restriction endonucleases
 - b) Autoradiography
 - c) Blotting of DNA fragments to nitrocellulose membrane
 - d) Isolation of DNA
 - e) Separation of DNA fragments by electrophoresis
- 1) (a), (e), (d), (c), (b)
 - 2) (e), (a), (d), (b), (c)
 - 3) (d), (a), (e), (c), (b)
 - 4) (c), (b), (a), (e), (d)

Ans. 3

29. Select the statement which is **'NOT'** true about Big Bang Theory.
- 1) Big Bang Theory explains the origin of Universe.
 - 2) As Universe expanded, the temperature came down.
 - 3) Hydrogen and Helium gases formed before the explosion.
 - 4) The gases condensed under gravitation, formed the galaxies.

Ans. 3

30. According to Hugo De Vries, speciation is due to _____.
- 1) Accumulation of small variations
 - 2) Intraspecific breeding
 - 3) Interspecific breeding
 - 4) Single-step large mutation

Ans. 4

31. Identify the correct order of stages in Human evolution.

- | | |
|---------------------|--------------------|
| a) Homo habilis | b) Homo erectus |
| c) Australopithecus | d) Neanderthal man |
| e) Dryopithecus | |
- 1) c → e → a → d → b 2) e → c → a → b → d
 3) d → e → b → c → a 4) d → c → a → e → b

Ans. 2

32. Pollen grains are well preserved as fossils because of the presence of _____

- | | |
|-------------------|-------------------|
| 1) Cellulose | 2) Sporopollenin |
| 3) Lignocellulose | 4) Pectocellulose |

Ans. 2

33. The causative organism of Pneumonia is _____

- 1) *Wuchereria malayi*
- 2) *Haemophilus influenza*
- 3) *Salmonella typhi*
- 4) *Trichophyton*

Ans. 2

34. Select the option that contains only secondary lymphoid organs.

- 1) Spleen, Tonsils, Thymus
- 2) Lymph nodes, Appendix, Tonsils
- 3) Peyer's patches, Tonsils, Bone marrow
- 4) Tonsils, Thymus, Lymph nodes

Ans. 2

35. Identify the biological response modifier substance which activates the immune system and helps in destroying the tumor.

- | | |
|--------------|------------------|
| 1) Histamine | 2) α-Interferon |
| 3) Serotonin | 4) α-Lactalbumin |

Ans. 2

36. The conversion of milk into curd by LAB increases the nutritional value by producing _____

- | | |
|--------------|----------------------------|
| 1) Vitamin A | 2) Vitamin B ₁₂ |
| 3) Vitamin C | 4) Vitamin D |

Ans. 2

37. BOD of polluted water is estimated by measuring the amount of _____

- 1) Total organic matter
- 2) Oxygen evolution
- 3) Oxygen consumption
- 4) Biodegradable organic matter

Ans. 3

38. Given below are two statements.

Statement-I: Baculoviruses are pathogens that attack nematodes.

Statement-II: Baculoviruses are used as biological control agents in ecologically sensitive areas as they are species-specific in their action.

In the light of the above statements, choose the correct answer from the options given below.

- 1) Both Statement I and Statement II are true
- 2) Both Statement I and Statement II are false
- 3) Statement I is true, but Statement II is false
- 4) Statement I is false, but Statement II is true

Ans. 4

39. Technique to alter the chemistry of genetic materials, DNA and RNA, to introduce these into host organism and change the phenotype of the host is

- 1) Bioprocess engineering
- 2) Cloning
- 3) Genetic engineering
- 4) Transformation

Ans. 3

40. Given below are two statements.

Statement-I: Restriction enzyme BamHI has its recognition site in tet^R region of pBR322.

Statement-II: E.coli having pBR322 with a desired DNA if inserted at BamHI site can grow in medium containing tetracycline.

In the light of the above statements, choose the correct answer from the options given below.

- 1) Both Statement I and Statement II are true
- 2) Both Statement I and Statement II are false
- 3) Statement I is true, but Statement II is false
- 4) Statement I is false, but Statement II is true

Ans. 3



ASHOK PU COLLEGE

Approved by Board of Pre-University Education, Karnataka



ಡಿ.ಆರ್. ಅಕಾಡೆಮಿ DR ACADEMY DO RIGHT FOR GENUINE EDUCATION

Congratulations

2nd PUC SCIENCE 2026 TOPPERS



591
MARKS

DEEPTHI T M
App No. 20269156020



591
MARKS

SINCHANA R
App No. 20269156317



590
MARKS

SAMRUDDI SADALAPUR
App No. 20269156279



589
MARKS

NANDINI
App No. 20269156179



589
MARKS

PUNARAV
App No. 20269154533



588
MARKS

KRISHNA PRASAD D M
App No. 20269154352



587
MARKS

SOUMYAMANI P L
App No. 20269156330



587
MARKS

TARUN A M
App No. 20269154703



586
MARKS

KUNDAN KRISHNA
App No. 20269154353



585
MARKS

SHREYA PATIL
App No. 20269156313



585
MARKS

MALLIKARJUNA PATIL
App No. 20269154386



585
MARKS

SHARAN KUMAR M S
App No. 20269154623



585
MARKS

PRAJWAL V HIREMATH
App No. 20269154513



585
MARKS

SIRI PARTHIPALLI GOPAL
App No. 20269156322



585
MARKS

GADHADHAR P
App No. 20269154256



585
MARKS

NEHA P
App No. 20269156192



584
MARKS

BHUVI ASHOK AJARADDI
App No. 20269155988



584
MARKS

CHANDANA M
App No. 20269155997



584
MARKS

NEHA N
App No. 20269156191



584
MARKS

DEEPTHI J
App No. 20269156019

ADMISSION OPEN
2026 - 2027

100% PASS

ADMISSION OPEN

2026 - 2027

DAY & RESIDENTIAL

SEPARATE HOSTEL FOR BOYS & GIRLS

ASHOK COMPOSITE PU COLLEGE

ASHOK GIRLS PU COLLEGE

DISTINCTION

FIRST CLASS

488

54



584
MARKS

SHASHANK A Y
App No. 20269154629



584
MARKS

SPOORTHI B R
App No. 20269156334



584
MARKS

G HEMA CHANDANA
App No. 20269156041



583
MARKS

SADIYA ISHRATH
App No. 20269156266



583
MARKS

VAISHNAVI M
App No. 20269156370



583
MARKS

ROHITHA T V
App No. 20269156259



583
MARKS

ADARSH M S
App No. 20269154097



582
MARKS

JEEVAN Y
App No. 20269154315



582
MARKS

KRUTHIKA N
App No. 20269156104



582
MARKS

SAVITHA G T
App No. 20269156291



582
MARKS

NANDU K N
App No. 20269156184



582
MARKS

NIKHIL B V
App No. 20269154465



582
MARKS

SOURAV T N
App No. 20269154670



582
MARKS

RAHUL T L
App No. 20269154549



582
MARKS

SHARATH KUMAR HUGAR
App No. 20269154626



581
MARKS

NOOTHANA H R
App No. 20269156201



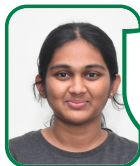
581
MARKS

NANDITHA M
App No. 20269156182



581
MARKS

DEEPIKA REDDY R M
App No. 20269156017



581
MARKS

LIKHITHA S
App No. 20269156123



581
MARKS

MOUNIKA B M
App No. 20269156168



581
MARKS

AKASH J
App No. 20269154108



581
MARKS

JEEVAN JAGRUTH B
App No. 20269154310



581
MARKS

KALMESH NINGAPPA N
App No. 20269154325



581
MARKS

AKSHAY
App No. 20269154119



581
MARKS

SAHASRA P S
App No. 20269156273



581
MARKS

ARYA RAO
App No. 20269154149



COURSES OFFERED

PCMCs / PCMB

JEE MAIN / NEET / KCET

JALAHALLI

#42, 100FT ROAD, KAMMAGONDANAHALLI, JALAHALLI WEST, BENGALURU - 560 015
+91 90080 30463 / +91 90080 30896 / +91 97400 79996

NELAMANGALA

DASANAPURA : #2/5, NARAYANAPPA PALYA, DASANAPURA, TUMKUR ROAD, BENGALURU - 560 062.
+91 95133 30438 / +91 99805 33120

41. Match List I with List II

List I	List II
a) Visualization of DNA in gel electrophoresis	i) Chitinase
b) Precipitation of DNA	ii) Lysozyme
c) Breaking of cell wall of bacteria	iii) Chilled ethanol
d) Breaking of cell wall of fungus	iv) Ethidium bromide

Codes:

- 1) a - iv, b - iii, c - ii, d - i
- 2) a - iii, b - iv, c - i, d - ii
- 3) a - iv, b - i, c - ii, d - iii
- 4) a - iii, b - ii, c - iv, d - i

Ans. 1

42. The human protein obtained from transgenic animals used to treat emphysema is

- 1) Insulin
- 2) α - Lactalbumin
- 3) α - 1 antitrypsin
- 4) β - Lactalbumin

Ans. 3

43. Given below are the sequence of events in the production of human insulin by Eli Lilly.

- a) Preparation of two DNA sequences corresponding to chain A and B of human insulin.
- b) Production of chain A and B separately.
- c) Introduction of chains in plasmids of E.coli.
- d) Extraction of chain A and B combining them by creating disulphide bonds.

Choose the correct sequence of events.

- 1) (a), (b), (c), (d)
- 2) (a), (c), (b), (d)
- 3) (a), (b), (d), (c)
- 4) (a), (d), (b), (c)

Ans. 2

44. Given below are two statements

Statement-I: Adenosine deaminase is crucial for the immune system to function.

Statement-II: Adenosine deaminase deficiency can be cured only by bone marrow transplantation.

In the light of the above statements, choose the correct answer from the options given below.

- 1) Both Statement I and Statement II are true
- 2) Both Statement I and Statement II are false
- 3) Statement I is true, but Statement II is false
- 4) Statement I is false, but Statement II is true

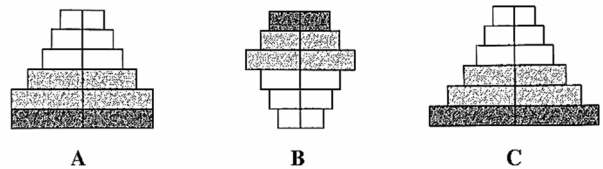
Ans. 3

45. Which of the following is not correct with reference to exponential growth model?

- 1) Resources are limited
- 2) Population grows in a geometric fashion
- 3) A stationary phase is never reached
- 4) Population grows beyond carrying capacity

Ans. 1

46. The following graphs represent age pyramids of a population.



Identify the correct option representing the status of age pyramids labelled as A, B and C

- 1) A - stable, B - expanding, C - declining
- 2) A - expanding, B - stable, C - declining
- 3) A - stable, B - declining, C - expanding
- 4) A - declining, B - stable, C - expanding

Ans. 3

47. Which one of the following options represents the steps of decomposition in sequence?

- 1) Fragmentation → Humification → Leaching → Catabolism → Mineralization
- 2) Fragmentation → Leaching → Catabolism → Humification → Mineralization
- 3) Fragmentation → Humification → Mineralization → Leaching → Catabolism
- 4) Fragmentation → Catabolism → Humification → Mineralization → Leaching

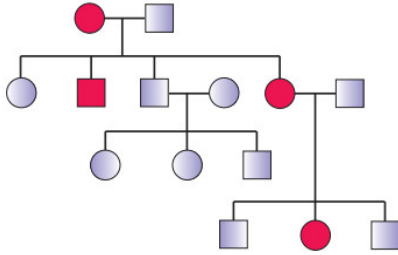
Ans. 2

48. The Annual Net Primary Productivity on land and ocean respectively are ____ and ____ billion tons.

- 1) 170, 107
- 2) 115, 55
- 3) 55, 115
- 4) 107, 170

Ans. 2

49. In a practical examination, the below given pedigree chart was given as spotter for identification. The students identified the pedigree chart as ____



- 1) Autosomal recessive
- 2) Autosomal dominant
- 3) Sex-linked dominant
- 4) Sex-linked recessive

Ans. 2

50. Given below are two statements.

Statement I: There is less species biodiversity in tropical latitudes than in temperate region
Statement II: Tropical environments unlike temperate ones are less seasonal, relatively more constant and predictable.

In the light of the above statements, choose the correct answer from the options given below.

- 1) Both Statement I and Statement II are true
- 2) Both Statement I and Statement II are false
- 3) Statement I is true, but Statement II is false
- 4) Statement I is false, but Statement II is true

Ans. 4

51. A student was given a bisexual, actinomorphic pentamerous, gamosepalous and gamopetalous with 5 stamens in epipetalous condition and bicarpellary syncarpous superior ovary and asked to state the floral formula. Which one of the following is the correct floral formula for the given flower?

- 1) $\oplus \overset{\curvearrowright}{\underset{\curvearrowleft}{\text{K}}_5 \text{C}_{(5)} \text{A}_5 \underline{\text{G}}_{(2)}$ 2) $\oplus \overset{\curvearrowright}{\underset{\curvearrowleft}{\text{K}}_5 \widehat{\text{C}}_5 \text{A}_5 \underline{\text{G}}_{(2)}$
- 3) $\oplus \overset{\curvearrowright}{\underset{\curvearrowleft}{\text{K}}_5 \widehat{\text{C}}_{(5)} \text{A}_5 \overline{\text{G}}_{(2)}$ 4) $\oplus \overset{\curvearrowright}{\underset{\curvearrowleft}{\text{K}}_5 \widehat{\text{C}}_{(5)} \text{A}_5 \underline{\text{G}}_{(2)}$

Ans. 4

52. A student was asked to identify a permanent slide of mitosis. He made the following observations.

- (i) Splitting of centromere and formation of daughter chromatids.
- (ii) Chromatids are migrating towards the opposite poles.

The stage would be

- 1) Metaphase
- 2) Telophase
- 3) Anaphase
- 4) Prophase

Ans. 3

53. With respect to binomial nomenclature, identify the incorrect statement.

- 1) Biological names are generally in Latin and written in Italics.
- 2) The first word in the name represents specific epithet and the second component denotes genus.
- 3) Both the words in the name when handwritten are separately underlined.
- 4) The first word starts with capital letter, while the second word starts with small letter.

Ans. 2

54. Organism 'X' is a multicellular, heterotrophic, eukaryote with a chitinous cell wall. In which kingdom will you place it?

- 1) Monera
- 2) Animalia
- 3) Protista
- 4) Fungi

Ans. 4

55. Read the following statements about Funaria and select the options which are correct.
 a) Gametophyte is the dominant plant body.
 b) The sporophyte is differentiated into foot, seta and capsule.

- c) The gemmae are asexual, green, multicellular buds found on the thallus.
 - d) The sporophyte has independent existence.
- 1) a and b
 - 2) a and c
 - 3) b and c
 - 4) c and d

Ans. 1

56. Match the animals given in List-I with their excretory organs in List-II.

List-I		List-II	
a)	Leech	i)	Flame cells
b)	Locust	ii)	Proboscis gland
c)	Liver fluke	iii)	Nephridia
d)	Balanoglossus	iv)	Malpighian tubules

Choose the correct option from the following.

- 1) a - ii, b - i, c - iv, d - iii
- 2) a - i, b - ii, c - iii, d - iv
- 3) a - iii, b - iv, c - i, d - ii
- 4) a - iv, b - iii, c - ii, d - i

Ans. 3

57. Identify the flower with polyadelphous condition.

- 1) Mustard
- 2) Chinrose
- 3) Citrus
- 4) Pea

Ans. 3



INDO SUNRISE PU COLLEGE

Approved by Board of Pre-University Education, Karnataka - BB 0212



ಡಿ.ಆರ್. ಅಕಾಡೆಮಿ DR ACADEMY DO RIGHT FOR GENUINE EDUCATION

Congratulations

2nd PUC SCIENCE 2026 TOPPERS



591
MARKS

DIVYASHREE A
App No. 20269235504



589
MARKS

HARSHITH P
App No. 20269235547



587
MARKS

T L SHILPA
App No. 20269235908



586
MARKS

VARSHA CHANNABASU M
App No. 20269235936



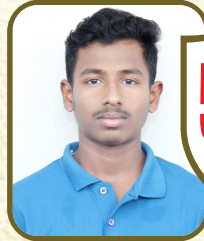
586
MARKS

GANGOTRI RAMAPPA B
App No. 20269235524



585
MARKS

SREEDHAR NANDHAN REDDY M
App No. 20269235872



583
MARKS

MOHAN G V
App No. 20269235691



582
MARKS

VARSHINI K
App No. 20269235939



580
MARKS

HIMASHREE M
App No. 20269235560



579
MARKS

ROOPA K Y
App No. 20269235803



579
MARKS

IMPANA K B
App No. 20269235565



578
MARKS

CHANDANA I N
App No. 20269235468



576
MARKS

USHA
App No. 20269235926



575
MARKS

CHAITHANYA N
App No. 20269235463



575
MARKS

GANESH N
App No. 20269235522



572
MARKS

CHAITHANYA P V
App No. 20269235464



572
MARKS

SHREYA N K
App No. 20269235846



571
MARKS

MONIKA S M
App No. 20269235695



571
MARKS

SHASHANK K M
App No. 20269235837



570
MARKS

KUSUMITHA N
App No. 20269235616

ADMISSION OPEN
2026 - 2027

100% PASS
SCIENCE

ADMISSION OPEN

2026 - 2027

DAY & RESIDENTIAL

SEPARATE HOSTEL FOR BOYS & GIRLS

DISTINCTION

FIRST CLASS

153

61



570
MARKS

KOUSHAL P N
App No. 20269235604



569
MARKS

NAGAPOORVI B
App No. 20269235705



569
MARKS

SHUBHASHREE H R
App No. 20269235850



569
MARKS

VAIBHAV G M
App No. 20269235929



568
MARKS

CHANDANA V
App No. 20269235469



568
MARKS

TANUJA R
App No. 20269235912



568
MARKS

SYED ASHAR IMAM
App No. 20269235893



568
MARKS

JAGAN G N
App No. 20269235571



567
MARKS

SINCHANA
App No. 20269235855



566
MARKS

DIKSHITHA S
App No. 20269235501



566
MARKS

KUSHITHA B
App No. 20269235612



565
MARKS

ASRA HARMAIN
App No. 20269235423



565
MARKS

SYEDA IFFATH FATHIMA
App No. 20269235906



565
MARKS

TEJAS GOWDA H E
App No. 20269235914



564
MARKS

POOJITHA P
App No. 20269235763



564
MARKS

PREKSHA B L
App No. 20269235778



564
MARKS

DHRUTHI R
App No. 20269235497



563
MARKS

LAXMI MURAGESH BHANGI
App No. 20269235625



563
MARKS

SUKRUTH G
App No. 20269235885



562
MARKS

PAVANA A
App No. 20269235756



562
MARKS

DEEPTHI B
App No. 20269235493



562
MARKS

JAYANTH V
App No. 20269235575



560
MARKS

KISHAN GOWDA R
App No. 20269235597



560
MARKS

HARIHARAN J
App No. 20269235538



559
MARKS

SNEHA N
App No. 20269235863



559
MARKS

SANJANA
App No. 20269235822



559
MARKS

HIMALATHA T L
App No. 20269235558



558
MARKS

AASIYA BUSHRA
App No. 20269235375



558
MARKS

HARSHA VARDAN REDDY N
App No. 20269235543



558
MARKS

SRUJAN K N
App No. 20269235874



558
MARKS

KOMAL S R
App No. 20269235601



558
MARKS

MOUINUDDIN SHARIFF
App No. 20269235697



558
MARKS

PRAMITH K P
App No. 20269235770



COURSES OFFERED

PCMCs / PCMB

JEE MAIN / NEET / KCET

8147397999 / 9741332998 / 9535527713

Hoskote - Malur road, ISRI Cross, Kattigenahalli, Jadigenahalli Hobli, Bengaluru - 562114

58. The large empty colourless cells seen on the upper epidermis in grasses which facilitate the curling of leaves to minimise water loss are
- 1) Guard cells
 - 2) Bulliform cells
 - 3) Subsidiary cells
 - 4) Mesophyll cells

Ans. 2

59. Find the incorrect statement among the following with respect to digestive system of frog.
- 1) Food is captured by a bilobed tongue.
 - 2) Oesophagus is a long tube that opens into the stomach and continues as intestine.
 - 3) Liver secretes bile that is stored in gall bladder.
 - 4) The undigested solid waste moves into rectum and passes out through cloaca.

Ans. 2

60. Which of the following is not the function of plasma membrane?
- 1) Endocytosis
 - 2) Formation of intercellular junctions
 - 3) Secretion
 - 4) DNA synthesis

Ans. 4



DR ACADEMY IS THE PERFECT DESTINATION FOR MEDICAL ASPIRANTS

THE JOURNEY...
NEET MEDICAL
SELECTIONS

123
2018

210
2019

182
2020

279
2021

445
2022

452
2023

569
2024

524
2025

DURING OUR EIGHT-YEARS JOURNEY, WE HAVE GENERATED
2784 MEDICAL AND 2900+ ENGINEERING SELECTIONS.

NEET-2022 | BMC, BANGALORE

650
MARKS
SANKALP

NEET-2022 | KIMS, HUBLI

650
MARKS
ABHIJIT RAMESH MIRJI

NEET - 2024 | VIMS - BELLARY

649
MARKS
KEERTI VEERANNA KORI

NEET - 2024 | VIMS - BELLARY

648
MARKS
SONIYA S

NEET - 2024 | BMC - BANGALORE

647
MARKS
NAVYA

NEET - 2024 | BIMC - BELAGAVI

647
MARKS
SIDDANAGOUDA PATIL

NEET - 2024 | BIMC - BELAGAVI

647
MARKS
OMKAR N MUDENUR

NEET-2024 | MIMS - MANDYA

647
MARKS
VIJAY KUMAR B DEYANNAVAR

NEET-2022 | BMC, BANGALORE

647
MARKS
SUPRIT SAMJAY K

NEET-2021 | BMC, BANGALORE

647
MARKS
PRAMOD I HONAGOUD

NEET-2020 | BMC, BANGALORE

647
MARKS
CHANDAN S

NEET-2024 | CIMS - CHAMARAJANAGAR

646
MARKS
BUTHESH G

NEET-2024 | GIMS - GADAG

646
MARKS
BASAVAKIRAN DHAREPPANAVAR

NEET-2024 | VIMS - BELLARY

646
MARKS
VENKATESH REDDY

NEET-2022 | BMC, BANGALORE

646
MARKS
SHIVAANI S GOUNDER

NEET-2022 | KIMS, HUBLI

646
MARKS
ROHAN R KONGI

NEET-2024 | BIMC - BELAGAVI

645
MARKS
CHANDANA B

NEET-2024 | GIMS - GADAG

645
MARKS
SHASHANK CHANDRA SHEKHAR KANDAGAL

NEET-2024 | MIMS - MANDYA

645
MARKS
PRASHANTGOUDA MENASAGI

NEET-2024 | PSGIMS - COIMBATORE

645
MARKS
GOURAV S

NEET-2024 | VIMS - BELLARY

645
MARKS
MEHANTH SAI REDDY G R

NEET-2023 | BMC, BANGALORE

645
MARKS
NABIYA MUSHTAQ AHMED M

NEET-2023 | GMC, SECUNDERABAD

645
MARKS
VJESH KANNA K

NEET-2022 | BMC, BANGALORE

645
MARKS
SAATHVIK S G

NEET-2021 | MMCRI, MYSORE

645
MARKS
AJEETH MALLAPPA T

NEET-2024 | HIMS - HASSAN

644
MARKS
DEEPTHI S M

NEET-2024 | MIMS - MANDYA

644
MARKS
SANJANA R

NEET-2023 | MMCRI, MYSORE

643
MARKS
VISHAL S PATIL

NEET-2022 | BMC, BANGALORE

643
MARKS
VAISHNAVI REDDY

NEET-2022 | SMC, CHENNAI

643
MARKS
S NAYANA

NEET-2021 | MMCRI, MYSORE

643
MARKS
CHANDANA N

NEET-2024 | RIMS - RAICHUR

642
MARKS
MOHD AFFAN HUSSAIN

NEET-2024 | SABVIMS - BENGALURU

642
MARKS
K RAKESH REDDY

NEET-2021 | SMC, CHENNAI

642
MARKS
NARENDRA BABU T V

NEET-2024 | CIMS - CHIKKABALLAPURA

641
MARKS
SIDDESH C S

NEET-2024 | GIMS - GADAG

641
MARKS
SUDEEP TANKASALI

NEET-2022 | BMC, BANGALORE

641
MARKS
PRAJWAL PATIL B R

NEET-2022 | BMC, BANGALORE

641
MARKS
FIZA ANJUM I T

NEET-2024 | BMC - BANGALORE

640
MARKS
SACHIN R BHAJANTRI

NEET-2024 | BGS - BANGALORE

640
MARKS
MOKSHITH N G

NEET-2024 | CIMS - CHIKKABALLAPURA

640
MARKS
ARYA PRASAD

NEET-2024 | GIMS - GADAG

640
MARKS
MOHAMMED SOHEB DOTEGAR

NEET-2024 | VIMS - BELLARY

640
MARKS
VINOD B

NEET-2023 | MMCRI, MYSORE

640
MARKS
SRUJAN S PATIL

NEET-2022 | BMC, BANGALORE

640
MARKS
CHINMAY SWAMY A M

NEET-2022 | MMCRI, MYSORE

640
MARKS
YASHAS T S

NEET-2024 | SIMS - SHIMOGA

639
MARKS
KOMAL GURAV

NEET-2022 | KIMS, HUBLI

639
MARKS
SOUMYA R BADAI

NEET-2024 | CIMS - CHAMARAJANAGAR

638
MARKS
LEKHASHREE N S

NEET-2024 | GIMS - GADAG

638
MARKS
SANGAMESH APPANNA MAGADUM

NEET-2022 | MMCRI, MYSORE

638
MARKS
NATARAJ K V

NEET-2024 | RIMS - RAICHUR

637
MARKS
BUSHRA Z K

NEET-2022 | BMC, BANGALORE

637
MARKS
TEJA A

NEET-2022 | BMC, BANGALORE

637
MARKS
AKASH S PATHRI

SUCCESS IS OUR CONSISTENT MANTRA, NO MATTER THE EXAM.

AND MANY MORE...



DR PU COLLEGE

Approved by Board of Pre-University Education Karnataka (AN-1037)



ASHOK PU COLLEGE

Approved by Board of Pre-University Education, Karnataka



INDO SUNRISE PU COLLEGE

Approved by Board of Pre-University Education, Karnataka - BB 0212

II PU SCIENCE ANNUAL EXAM - 2026 TOPPERS

 591 MARKS DEEPTHI T M App No. 20269156020	 591 MARKS SINCHANA R App No. 20269156317	 591 MARKS DIVYASHREE A App No. 20269235504	 590 MARKS SAMRUDDI SADALAPUR App No. 20269156279	 589 MARKS NANDINI App No. 20269156179	 589 MARKS PUNARAV App No. 20269154533	 589 MARKS HARSHITH P App No. 20269235547
 588 MARKS KRISHNA PRASAD D M App No. 20269154352	 587 MARKS SOUMYAMANI P L App No. 20269156330	 587 MARKS TARUN A M App No. 20269154703	 587 MARKS T L SHILPA App No. 20269154908	 586 MARKS KUNDAN KRISHNA App No. 20269154353	 586 MARKS VARSHA CHANNABASU M App No. 20269235936	 586 MARKS GANGOTRI RAMAPPA B App No. 20269235524
 585 MARKS SHREYA PATIL App No. 20269156313	 585 MARKS MALLIKARJUNA PATIL App No. 20269154386	 585 MARKS SHARAN KUMAR M S App No. 20269154623	 585 MARKS PRAJWAL V HIREMATH App No. 20269154513	 585 MARKS SIRI PARTHIPALLI GOPAL App No. 20269156322	 585 MARKS GADHADAR P App No. 20269154256	 585 MARKS NEHA P App No. 20269156192
 585 MARKS SREEDHAR NANDHAN REDDY M App No. 20269235872	 584 MARKS BHUVII ASHOK AJARADDI App No. 20269155988	 584 MARKS CHANDANA M App No. 20269155997	 584 MARKS NEHA N App No. 20269156191	 584 MARKS DEEPTHI J App No. 20269156019	 584 MARKS SHASHANK A Y App No. 20269156269	 584 MARKS SPOORTHI B R App No. 20269155334
 584 MARKS G HEMA CHANDANA App No. 20269156041	 583 MARKS SADIYA ISHRATH App No. 20269155266	 583 MARKS VAISHNAVI M App No. 20269156370	 583 MARKS ROHITHA T V App No. 20269156259	 583 MARKS ADARSH M S App No. 20269154097	 583 MARKS MOHAN G V App No. 20269235691	

ASHOK COMPOSITE PU COLLEGE - AN 0661
ASHOK GIRLS PU COLLEGE - AN 1003
INDO SUNRISE PU COLLEGE - BB 0212 (SCIENCE)

100% PASS

EXEMPLARY PERFORMANCE IN THE JEE MAIN - 2026 PHASE - I

 98.81 TEJAS KENCHAPPA	 98.10 REDDY SRIHARI V	 97.75 MANOJ H	 97.34 PAVAN R	 97.21 AKASH J	 96.43 P SANJANA SHREE
-------------------------------------	-------------------------------------	-----------------------------	-----------------------------	-----------------------------	-------------------------------------

JEE MAIN - 2025 ACHIEVERS

 99.42 APP.NO. 250310097015 NANDISH M	 99.24 APP.NO. 250310925539 JAYANTH K S	 97.93 APP.NO. 250310295805 THANMAY L	 97.86 APP.NO. 250310461214 SUMITH GOWDA D V	 97.67 APP.NO. 250310701826 HARSH B CHOUGALA
 97.63 APP.NO. 250310059123 MOKSHALAKSHMI J	 97.39 APP.NO. 250310057681 PREETHI S	 96.94 APP.NO. 250310088778 SHREEYA S S	 96.55 APP.NO. 250311007832 VIJAY M	 96.23 APP.NO. 250311024674 YASHAS N

NELMANGALA
LTM BOYS CAMPUS
DASANPURA
#2/5, Narayanappa Palya,
Dasanpura, Tumkur Road,
Bangalore - 560 062.
+91 95133 30438
+91 81399 66644
+91 99805 33120

JALAHALLI
#42, 100FT ROAD,
KAMMAGONDANAHALLI,
JALAHALLI WEST, BENGALURU - 560 015
+91 90080 30463
+91 90080 30896
+91 95133 30437

HOSAKOTE
LTM BOYS CAMPUS :- Defence Colony, Virognagar,
Cheemasandra, Avalahalli South, Hoskote - 560049
LTM GIRLS CAMPUS :- 1st Main Road,
Beside Adithya PU College,
4th Cross, TG Extension, Hoskote.
+91 97413 32998
+91 81473 97999
+91 95355 27713